



**Development Services**  
 Planning Division  
 305 Chestnut Street  
 PO Box 1810  
 Wilmington, NC 28402-1810

910 254-0900  
 910 341-3264 fax  
 www.wilmingtonnc.gov  
 Dial 711 TTY/Voice

APPROVED: X DENIED: \_\_\_\_\_

PERMIT #: TPP-19-207

**Application for Tree Removal Permit**

Name of Applicant: Donald J. Henry Phone: 910-473-5409 Date: 5/20/2019

Name of Property Owner: NNP IV Cape Fear River LLC Phone: 910-343-1048

Property Owner Address: 109 Pier Master Point, Suite 209 Wilmington, NC 28412

Address of Proposed Tree Removal: 4410 River Road Wilmington, NC 28412

Description of tree(s) to be removed/reason for removal: (provide attachment if necessary)

- 1. See Attached 6. \_\_\_\_\_
- 2. \_\_\_\_\_ 7. \_\_\_\_\_
- 3. \_\_\_\_\_ 8. \_\_\_\_\_
- 4. \_\_\_\_\_ 9. \_\_\_\_\_
- 5. \_\_\_\_\_ 10. \_\_\_\_\_

Description of Replacement Tree(s): Trees within the Watercraft Ferry Extension shall be replaced through the planting of street trees, buffer planting, and proposed park areas. See site plan.

Applicant Signature: [Signature] Date: 5/20/19

\*\*\*\*\*FOR OFFICIAL USE ONLY\*\*\*\*\*

Reviewed By: [Signature] Date: 6/27/19

Remarks: Per APPROVAL PERM SEE TABLES ATTACHED

ALL WORK MUST BE IN COMPLIANCE WITH THE CITY LAND DEVELOPMENT CODE, ARTICLE 8, LANDSCAPING AND TREE PRESERVATION.

NEW CONSTRUCTION: \_\_\_\_\_ EXPANSION: \_\_\_\_\_ OTHER: \_\_\_\_\_ PAID: \$100.00

Tree Preservation Permit Fees

Less than 1 acre	\$25.00
1-5 acres	\$50.00
<u>5-10 acres</u>	\$100.00
Greater than 10 acres	\$150.00

no  
5/21/19  
BC

**Wilmington Landscaping Ordinance**  
**RiverLights Watercraft Ferry Avenue Extension**

**Minimum number of Trees to be on Post Development Site**

15 Trees/Acre \* **6.93** Project Area \*\*  
 Equals = **0** Trees

\*\*Project area consist of essential site improvements only.

Protected Trees to be Removed					
133	Pines	0	Gum/Maple	0	Mimosa
112	Oaks	0	Cherry	0	Poplar
0	Crape Myrtle	0	Magnolia	0	Amer. Holly
			Total =	245	Trees

Type	Regulated	Significant
Conifers	55	0
Hardwoods	97	1
Flowering Trees	0	0
<b>Total Removed =</b>		<b>153</b>

**Regulated Trees for Mitigation**

Pines	( 0 DBH * 100% )	/	3 =	0 Trees
Oaks	( 0 DBH * 50% )	/	3 =	0 Trees
Gum/Maple	( 0 DBH * 50% )	/	3 =	0 Trees
Cherry	( 0 DBH * 0% )	/	3 =	0 Trees
Crate Myrtle	( 0 DBH * 0% )	/	3 =	0 Trees
Magnolia	( 0 DBH * 0% )	/	3 =	0 Trees
Mimosa	( 0 DBH * 0% )	/	3 =	0 Trees
Poplar	( 0 DBH * 0% )	/	3 =	0 Trees
Amer. Holly	( 0 DBH * 100% )	/	3 =	0 Trees

**Significant Trees for Mitigation**

Pines	( 0 DBH *2* 100% )	/	3 =	0 Trees
Oaks	( 24 DBH *2* 100% )	/	3 =	16 Trees
Gum/Maple	( 0 DBH *2* 0% )	/	3 =	0 Trees
Cherry	( 0 DBH *2* 0% )	/	3 =	0 Trees
Crate Myrtle	( 0 DBH *2* 0% )	/	3 =	0 Trees
Magnolia	( 0 DBH *2* 0% )	/	3 =	0 Trees
Mimosa	( 0 DBH *2* 0% )	/	3 =	0 Trees
Poplar	( 0 DBH *2* 100% )	/	3 =	0 Trees

<b>TOTAL MITIGATION REQUIRED =</b>	<b>16 Trees</b>
------------------------------------	-----------------

**WATERCRAFT FERRY AVENUE EXTENSION**

	COUNT
REGULATED*	152
SIGNIFICANT	1
NON-REGULATED	92
TOTAL REMOVED	245

\*Regulated trees exempt from mitigation due to location on essential site improvements.

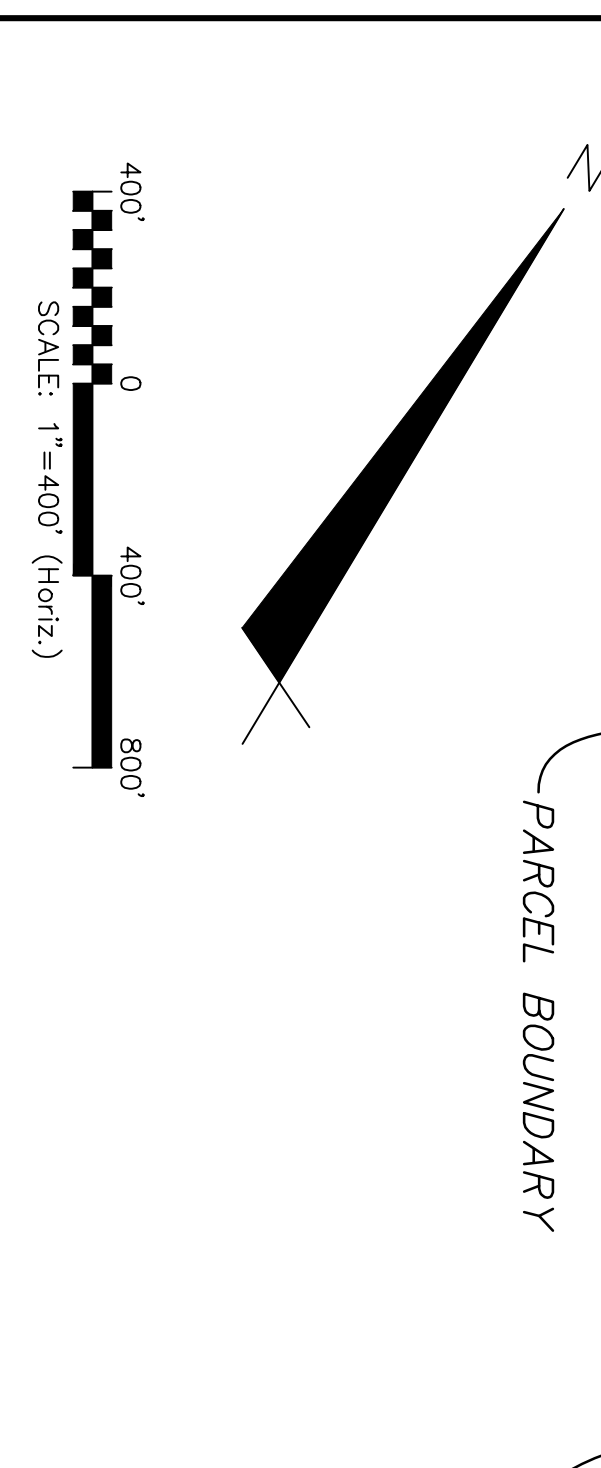
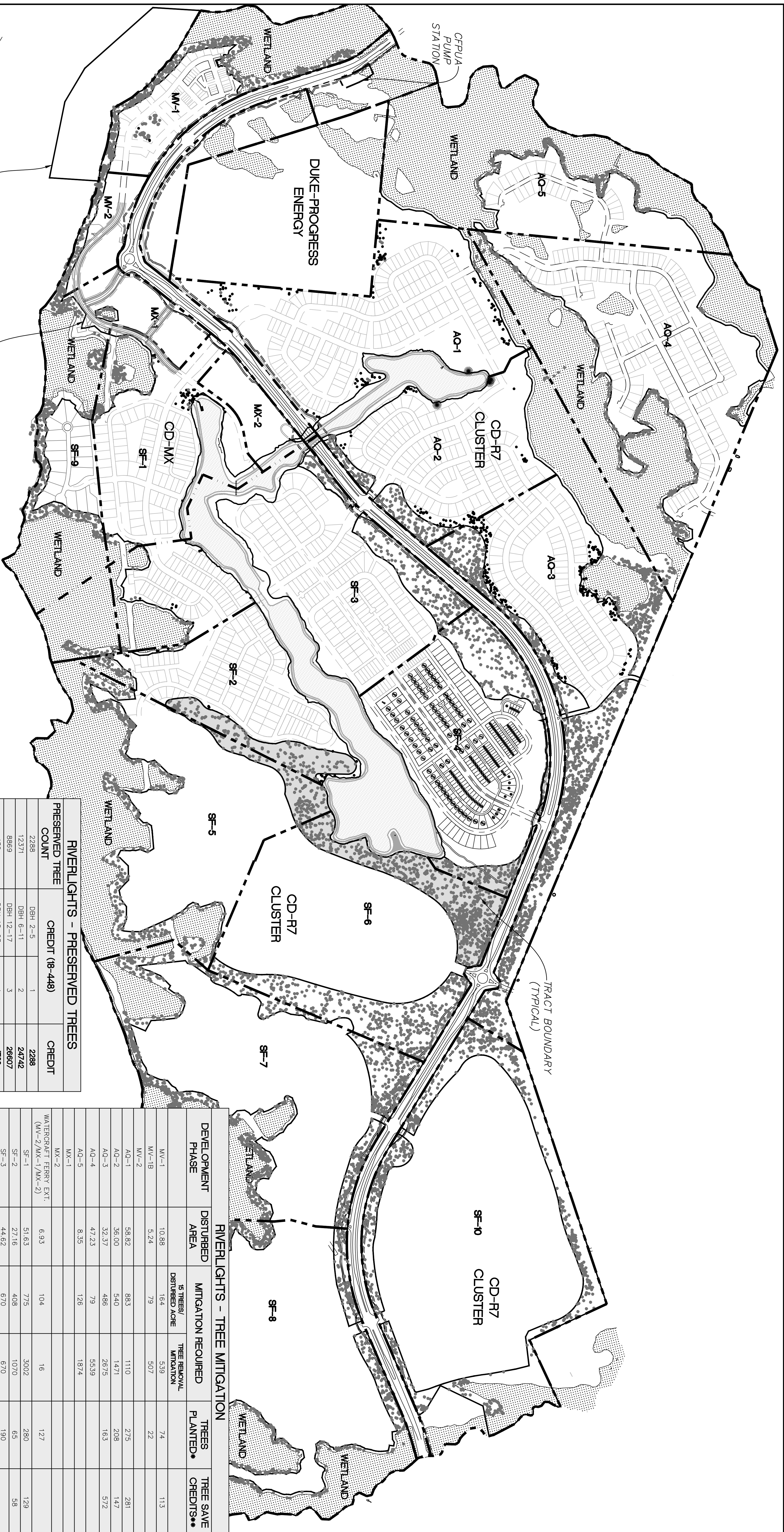
TREES TO BE REMOVED				
NORTHING	EASTING	ELEVATION	TYPE	DIAMETER
147033.33	2320064.99	10.68	OAK	4
147127.59	2320100.16	6.03	OAK	4
147073.55	2320163.89	9.17	OAK	4
147143.35	2320088.11	5.65	OAK	4
147145.08	2320072.19	5.84	OAK	4
147169.59	2320066.25	6.77	OAK	4
147182.93	2320059.35	7.48	OAK	4
147188.97	2320038.35	7.97	OAK	4
147188.95	2320029.86	8.15	OAK	4
147224.81	2320013.73	9.47	OAK	4
147213.45	2319969.87	8.30	OAK	4
147221.07	2319965.33	8.39	OAK	4
147190.91	2319986.47	7.93	OAK	4
147001.24	2320900.73	9.20	OAK	6
147008.18	2320913.58	9.42	OAK	6
147020.66	2320069.60	10.85	OAK	6
147038.85	2320056.19	10.77	OAK	6
147050.17	2320040.76	10.22	OAK	6
147065.95	2320063.55	9.42	OAK	6
147045.05	2320066.91	10.42	OAK	6
147066.46	2320087.00	9.77	OAK	6
147087.86	2320141.88	8.07	OAK	6
147100.80	2320209.86	8.42	OAK	6
147082.60	2320209.91	8.91	OAK	6
147110.51	2320269.04	7.79	OAK	6
147131.32	2320243.36	6.54	OAK	6
147144.69	2320077.87	5.71	OAK	6
147142.81	2320067.58	5.78	OAK	6
147178.01	2320059.48	7.33	OAK	6
147185.19	2320058.01	7.72	OAK	6
147208.79	2320030.03	9.03	OAK	6
147218.26	2320033.85	9.48	OAK	6
147242.19	2320005.55	10.09	OAK	6
147218.17	2320013.40	9.17	OAK	6
147226.43	2319960.82	8.61	OAK	6
147234.23	2319954.46	8.76	OAK	6
147183.36	2319973.09	7.47	OAK	6
147177.31	2319968.92	7.26	OAK	6
147191.79	2319969.10	8.06	OAK	6
147089.57	2320035.15	7.46	OAK	6
147101.99	2320030.08	6.50	OAK	6
147121.49	2320034.52	5.96	OAK	6
147141.75	2319995.77	5.66	OAK	6
147142.12	2320003.73	5.69	OAK	6
147145.58	2319981.41	5.58	OAK	6
147154.33	2319995.56	6.17	OAK	6

NORTHING	EASTING	ELEVATION	TYPE	DIAMETER
147225.55	2320344.37	4.77	OAK	6
147152.94	2320329.00	5.61	OAK	6
147496.72	2319931.65	15.08	OAK	6
147513.58	2319922.97	13.92	OAK	6
147883.33	2320006.45	19.76	OAK	6
147879.91	2320008.85	19.50	OAK	6
146976.98	2321060.72	15.22	OAK	6
146998.45	2321075.56	16.12	OAK	6
146962.94	2321115.25	14.97	OAK	6
146968.58	2321140.43	15.09	OAK	6
147048.53	2320633.09	5.73	OAK	8
147048.86	2320628.25	5.65	OAK	8
147041.87	2320627.46	5.64	OAK	8
147055.89	2320601.23	6.02	OAK	8
147057.78	2320599.50	6.29	OAK	8
147196.31	2320047.42	8.42	OAK	8
147116.87	2320039.88	6.34	OAK	8
147185.24	2319966.56	7.53	OAK	8
147118.05	2320011.36	5.71	OAK	8
147261.20	2320279.53	5.72	OAK	8
147315.34	2320366.93	9.71	OAK	8
147314.52	2320350.82	10.47	OAK	8
147308.76	2320349.31	10.00	OAK	8
147307.79	2320360.04	9.02	OAK	8
147303.60	2320364.65	8.73	OAK	8
147304.94	2320368.25	9.16	OAK	8
147271.54	2320354.88	7.08	OAK	8
147284.63	2320317.18	8.11	OAK	8
147169.35	2320334.05	5.19	OAK	8
147002.64	2320462.21	6.18	OAK	8
146991.21	2321052.86	15.17	OAK	8
147005.14	2320464.11	6.01	OAK	10
147002.63	2320462.01	6.18	OAK	10
146877.94	2320451.22	6.35	OAK	10
146880.87	2320392.73	6.43	OAK	10
146886.77	2320289.34	9.33	OAK	10
146972.05	2320259.18	5.05	OAK	10
147367.13	2320336.82	25.85	OAK	10
147322.19	2320360.92	10.32	OAK	10
147301.88	2320374.97	9.08	OAK	10
147295.59	2320364.94	8.16	OAK	10
147286.69	2320370.75	7.65	OAK	10
147284.53	2320366.79	7.95	OAK	10
147277.82	2320372.36	7.10	OAK	10
146914.85	2320516.02	6.89	OAK	12
146946.01	2320430.21	9.10	OAK	12
146935.20	2320479.07	8.55	OAK	12
146956.11	2320477.15	8.98	OAK	12
146946.07	2320430.82	9.10	OAK	12
146926.63	2320360.08	8.07	OAK	12
146895.46	2320381.54	7.78	OAK	12
146862.25	2320262.28	9.68	OAK	12
146983.17	2320204.16	3.78	OAK	12
146977.62	2320188.17	3.84	OAK	12
147242.19	2320368.04	6.13	OAK	12
147233.52	2320357.86	5.34	OAK	12
147141.70	2320317.61	5.96	OAK	12
147149.16	2320324.04	5.89	OAK	12

NORTHING	EASTING	ELEVATION	TYPE	DIAMETER
146847.21	2320314.87	7.63	OAK	15
147073.68	2320276.12	6.97	OAK	15
147179.15	2320343.31	5.18	OAK	15
146917.76	2320354.21	7.94	OAK	16
146888.61	2320352.58	8.16	OAK	16
146880.15	2320365.94	6.80	OAK	18
146917.76	2320354.34	7.94	OAK	18
146928.52	2320429.40	9.99	OAK	24
147100.74	2320239.17	8.30	PINE	8
147187.32	2320226.71	2.71	PINE	8
147159.89	2320071.70	6.38	PINE	8
147166.44	2320072.15	6.67	PINE	8
147217.52	2319951.18	8.36	PINE	8
147235.39	2319963.71	9.03	PINE	8
147304.52	2320287.75	10.89	PINE	8
146901.19	2320457.32	7.56	PINE	10
147102.52	2320235.75	8.37	PINE	10
147103.78	2320270.03	8.02	PINE	10
147132.21	2320258.95	6.32	PINE	10
147429.01	2319982.21	8.55	PINE	10
147171.22	2320227.02	2.65	PINE	10
147225.28	2319950.34	8.55	PINE	10
147429.06	2319983.41	17.98	PINE	10
147454.48	2319984.11	17.68	PINE	10
147482.14	2319978.49	14.96	PINE	10
147129.14	2320298.17	6.76	PINE	10
147954.99	2320060.02	22.81	PINE	10
147930.43	2320065.45	22.91	PINE	10
147786.83	2320067.91	14.19	PINE	10
147821.40	2320016.53	18.34	PINE	10
147662.90	2319971.24	6.83	PINE	10
147537.87	2319991.21	9.17	PINE	10
147591.32	2319944.49	6.82	PINE	10
147590.60	2319955.12	6.71	PINE	10
147601.53	2319940.44	6.44	PINE	10
146980.89	2320998.21	12.09	PINE	10
146961.67	2321019.76	13.01	PINE	10
146965.53	2321015.63	12.91	PINE	10
146980.98	2320998.19	12.09	PINE	10
146987.32	2321025.69	13.71	PINE	10
146994.22	2321048.93	15.03	PINE	10
146952.00	2321040.59	13.54	PINE	10
146954.65	2321031.17	13.54	PINE	10
147803.27	2320012.00	16.73	PINE	11
147035.99	2320934.29	12.53	PINE	12
147033.34	2320915.81	11.99	PINE	12
146992.64	2320964.48	10.64	PINE	12
146993.92	2320967.60	10.65	PINE	12
147006.07	2320985.50	12.21	PINE	12
147034.34	2320834.26	11.28	PINE	12
147052.02	2320836.65	12.90	PINE	12
146899.64	2320372.21	7.61	PINE	12
146939.55	2320462.60	8.91	PINE	12
147015.27	2320488.67	7.01	PINE	12
146899.74	2320373.01	7.61	PINE	12
146858.62	2320295.00	8.85	PINE	12
147079.95	2320267.02	7.94	PINE	12
147015.73	2320330.74	3.07	PINE	12

NORTHING	EASTING	ELEVATION	TYPE	DIAMETER
147073.83	2320173.32	9.00	PINE	12
147077.27	2320170.52	8.93	PINE	12
147077.82	2320233.75	8.51	PINE	12
147108.48	2320225.00	8.25	PINE	12
147124.09	2320254.21	7.37	PINE	12
147148.65	2320011.44	6.28	PINE	12
147305.38	2320324.69	10.40	PINE	12
147364.16	2320313.90	14.52	PINE	12
147383.58	2320333.55	13.24	PINE	12
147207.51	2320360.21	6.53	PINE	12
147373.11	2320293.21	13.21	PINE	12
147378.81	2320330.80	13.88	PINE	12
147255.75	2320361.38	6.53	PINE	12
147207.59	2320264.20	3.04	PINE	12
147204.52	2320257.39	2.96	PINE	12
147198.64	2320263.40	2.43	PINE	12
147156.19	2320287.66	4.30	PINE	12
147150.60	2320280.07	4.72	PINE	12
147140.99	2320306.28	5.78	PINE	12
147131.44	2320286.90	6.27	PINE	12
147321.30	2319919.75	8.93	PINE	12
147554.41	2319944.65	8.86	PINE	12
147792.32	2320122.17	14.71	PINE	12
147799.66	2320078.29	15.90	PINE	12
146968.57	2321174.89	15.47	PINE	12
146939.01	2321142.21	13.80	PINE	12
147008.52	2321007.70	13.56	PINE	12
147022.06	2321011.45	14.41	PINE	12
146958.06	2321142.43	14.82	PINE	12
146939.01	2321115.32	13.90	PINE	12
146944.74	2321042.93	13.46	PINE	12
146953.14	2321054.80	14.21	PINE	12
146950.76	2321060.49	14.58	PINE	12
146863.26	2320526.19	6.13	PINE	14
147854.53	2320016.28	19.62	PINE	14
146974.54	2320996.10	11.92	PINE	14
146989.06	2321011.24	13.08	PINE	14
147008.82	2320901.58	9.45	PINE	15
147030.40	2320881.46	11.62	PINE	15
147029.60	2320924.95	11.71	PINE	15
146984.65	2320963.25	10.48	PINE	15
146877.39	2320296.21	9.30	PINE	15
146926.22	2320411.36	9.89	PINE	15
146922.08	2320381.61	9.10	PINE	15
146877.45	2320297.59	9.30	PINE	15
146856.89	2320255.10	9.50	PINE	15
147017.43	2320289.75	4.04	PINE	15
147007.21	2320311.96	3.77	PINE	15
146989.84	2320174.64	3.89	PINE	15
147055.45	2320225.31	7.84	PINE	15
147058.95	2320175.78	8.97	PINE	15
147035.07	2320094.06	10.73	PINE	15
147052.62	2320082.64	10.87	PINE	15
147165.88	2319983.82	7.27	PINE	15
147359.13	2319935.94	12.84	PINE	15
147383.49	2319919.24	12.97	PINE	15
147173.97	2320271.90	3.68	PINE	15
147132.89	2320326.21	6.84	PINE	15

NORTHING	EASTING	ELEVATION	TYPE	DIAMETER
147184.47	2320282.33	2.77	PINE	15
147189.13	2320293.97	2.98	PINE	15
147132.89	2320326.21	6.84	PINE	15
147186.87	2320331.48	4.88	PINE	15
147494.49	2319922.40	15.47	PINE	15
146902.62	2320503.80	7.26	PINE	16
146890.68	2320431.96	7.04	PINE	16
146933.79	2320347.19	8.36	PINE	16
146964.91	2320954.25	9.13	PINE	16
147010.55	2320891.16	9.72	PINE	18
147064.08	2320672.57	9.18	PINE	18
147069.53	2320725.83	11.82	PINE	18
146921.26	2320487.22	8.58	PINE	18
146950.14	2320442.25	9.34	PINE	18
146860.86	2320377.99	5.75	PINE	18
147014.39	2320070.21	3.69	PINE	18
146976.86	2320232.67	4.44	PINE	18
147017.66	2320299.89	3.69	PINE	18
147014.45	2320071.71	10.39	PINE	18
146907.91	2320239.18	8.26	PINE	18
147277.98	2320344.11	7.88	PINE	18
147203.55	2320236.44	2.71	PINE	20
146895.40	2320378.54	7.95	PINE	24
147009.49	2320370.61	4.84	PINE	24
146982.93	2320247.15	4.82	PINE	30



CAPE FEAR RIVER

•• STREET TREES  
•• TREES REMAINING ON SITE OUTSIDE OF THE TREE SAVE BOUNDARY

RIVERLIGHTS - PRESERVED TREES		
PRESERVED TREE COUNT	CREDIT (18'-448)	CREDIT
22288	DBH 2-5	1
12371	DBH 6-11	2
8869	DBH 12-17	3
432	DBH 18-23	4
54	DBH 24	4
1	DBH 25	4
4	DBH 26	4
3	DBH 27	4
1	DBH 28	4
6	DBH 30	6
2	DBH 32	6
4	DBH 36	6
2	DBH 40	6
	<b>MITIGATION CREDIT -</b>	<b>55699</b>

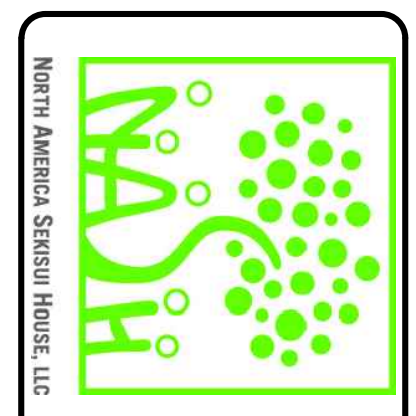
RIVERLIGHTS - TREE MITIGATION					
DEVELOPMENT PHASE	DISTURBED AREA	MITIGATION REQUIRED <small>15 TREES/ DISTURBED ACRE</small>	TREE REMOVAL MITIGATION	TREES PLANTED*	TREE SAVE CREDITS**
WV-1	10.88	164	539	74	113
WV-1B	5.24	79	507	22	
WV-2					
AO-1	58.82	883	1110	275	281
AO-2	36.00	540	1471	208	147
AO-3	32.37	486	2675	163	572
AO-4	47.23	79	5539		
AO-5	8.35	126	1874		
MX-1					
MX-2					
WATERCRAFT FERRY EXT. (WV-2/MX-1/MX-2)	6.93	104	16	127	
SF-1	51.63	775	3002	280	129
SF-2	27.16	408	1070	65	58
SF-3	44.62	670	670	190	
SF-4	53.83	808	2063	247	
SF-5					
SF-6					
SF-7					
SF-8	2.36	36	147		
SF-9					
SF-10	0.20	3	51		
ENTRY MONUMENTS				371	
RIVER ROAD					1300
TOTAL	385.62	5161	20734	2022	17412

NO.	REVISIONS	DATE

SCALE

SCALE

**MCKIM & CREED**  
 243 North Front Street  
 Wilmington, North Carolina 28401  
 Phone: (910)343-1048, Fax: (910)251-8282  
 License: F-1122  
 www.mckimcreed.com



**RIVERLIGHTS**  
 MASONBORO TOWNSHIP - WILMINGTON, NEW HANOVER COUNTY, NORTH CAROLINA  
**TREE PRESERVATION PLAN**

DATE: 06/27/2019  
 M/E PROJ.# 2735-0143  
 DESIGNED: ALM/AH  
 CHECKED: KBE/NAL  
 PROJ. MGR: KBE  
 STATUS: **FINAL DESIGN**  
 FOR REVIEW

SCALE: HORIZONTAL: 1"=400' VERTICAL: 1"=400'

FIG. 101  
 DRAWING NUMBER  
 1